



136a Moor Lane

Crosby, Liverpool, L23 2UQ

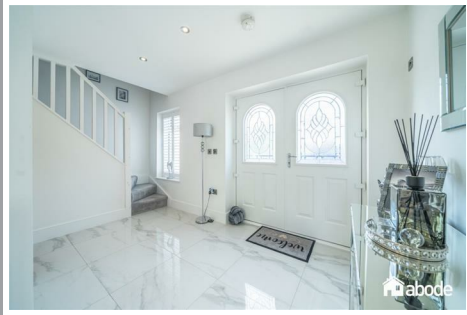
Offers over £475,000



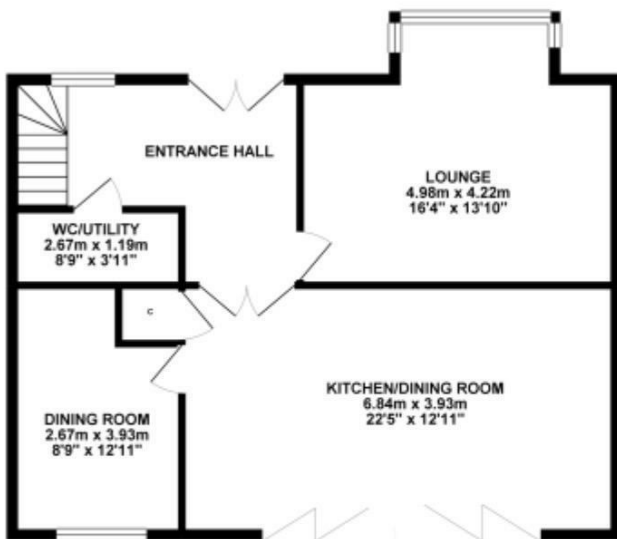
136a Moor Lane

Crosby, Liverpool, L23 2UQ

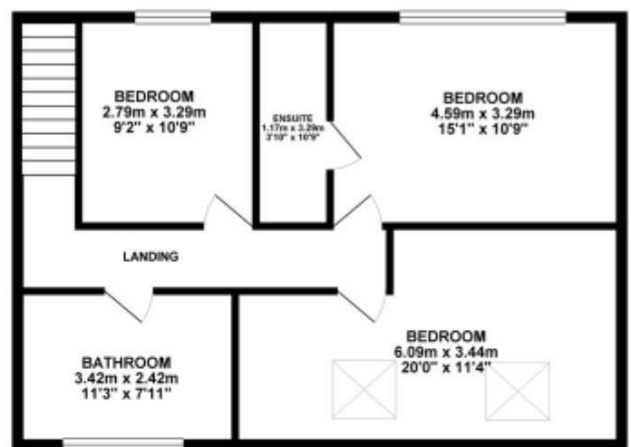
Offers over £475,000



GROUND FLOOR 70.68 sq. m.
(760.78 sq. ft.)

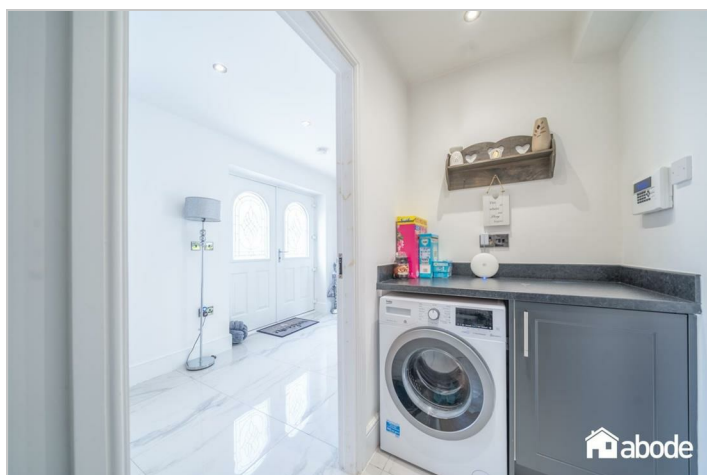


1ST FLOOR 64.00 sq. m.
(688.92 sq. ft.)

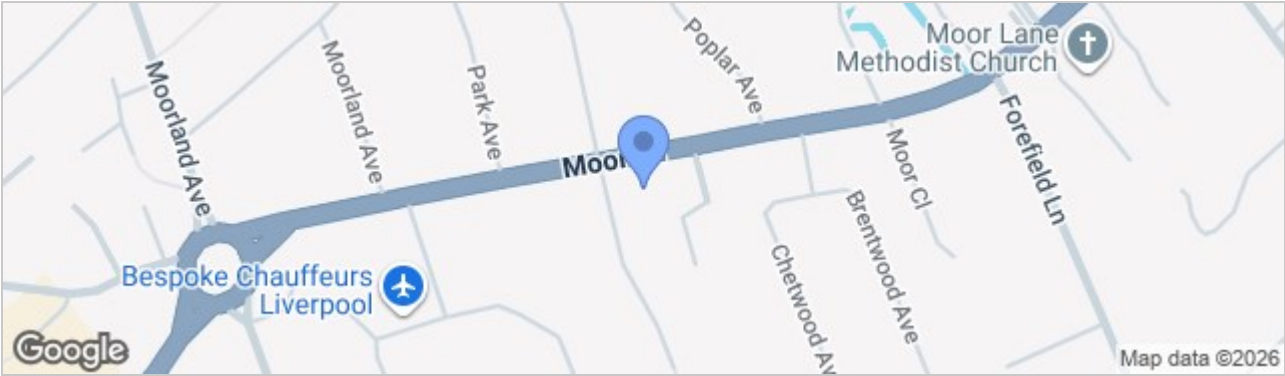


TOTAL FLOOR AREA : 134.68 sq. m. (1449.69 sq. ft.) approx.

Whilst every attempt has been made to ensure the accuracy of the floorplan contained here, measurements of doors, windows, rooms and any other items are approximate and no responsibility is taken for any error, omission or mis-statement. This plan is for illustrative purposes only and should be used as such by any prospective purchaser. The services, systems and appliances shown have not been tested and no guarantee as to their operability or efficiency can be given.
Made with Metropix ©2025



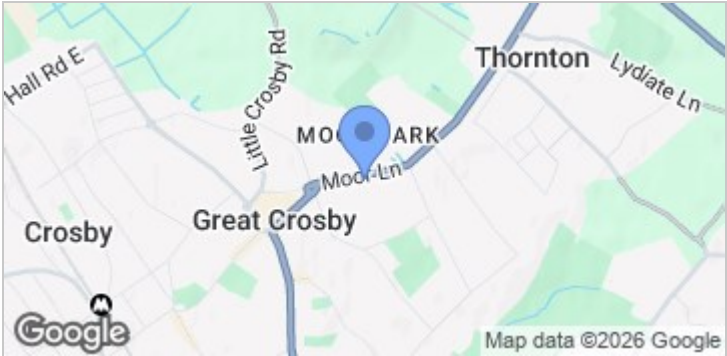
Road Map



Hybrid Map



Terrain Map



- **BEAUTIFUL DETACHED HOME**
- **BUILT IN 2019**
- **THREE DOUBLE BEDROOMS AND POTENTIAL FOR A FORTH DOUBLE BEDROOM DOWNSTAIRS**
- **STUNNING OPEN PLAN KITCHEN DINER WITH ISLAND UNIT**
- **WRAP AROUND LANDSCAPED GARDEN**
- **SECLUDED PLOT**
- **CONTEMPORARY FAMILY BATHROOM, UTILTY ROOM/WC AND EN SUITE SHOWER ROOM**
- **OFF ROAD PARKING FOR MULTIPLE CARS**
- **CLOSE TO CROSBY VILLAGE**

Viewing

Please contact our Crosby Office on 01519093003 if you wish to arrange a viewing appointment for this property or require further information.

These particulars, whilst believed to be accurate are set out as a general outline only for guidance and do not constitute any part of an offer or contract. Intending purchasers should not rely on them as statements of representation of fact, but must satisfy themselves by inspection or otherwise as to their accuracy. No person in this firms employment has the authority to make or give any representation or warranty in respect of the property.

Energy Efficiency Graph

